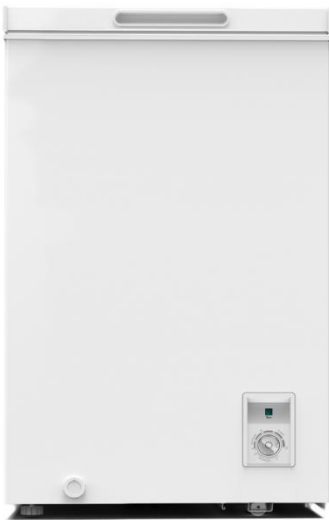


electriQ

USER MANUAL



eiQCHEST99LED
eiQCHEST99LEDBLK

99 Litre Chest Freezer

eiQCHEST141LED
eiQCHEST141LEDBLK

142 Litre Chest Freezer

eiQCHEST199LED
eiQCHEST199LEDBLK

199 Litre Chest Freezer

Thank you for choosing electriQ

Please read this user manual before using this Chest
Freezer and keep it safe for future reference.

Visit our page www.electriQ.co.uk for our entire product range

CONTENTS

SAFETY WARNINGS	3
PROPER USE OF THE FREEZER	
PLACEMENT	6
STARTING TO USE	6
ENERGY SAVING TIPS	7
KEY COMPONENTS	7
CONTROL DIAL	8
CARE AND MAINTENANCE	
OVERALL CLEANING	9
DEFROSTING	9
WHEN NOT IN OPERATION	10
DRAIN OUTLET	10
TROUBLESHOOTING	11
SUPPORT	12
DISPOSAL	12
PRODUCT FICHE	13

SAFETY WARNINGS

For your continued safety and to reduce the risk of injury or electric shock, please follow all the safety precautions listed below.

- Read all instructions carefully before using the appliance and keep them for future reference.
- Retain the manual. If you pass the unit onto a third party, make sure to include the manual.
- This appliance is intended to be used in household and similar applications and is not designed for use within a commercial environment. It shall not be used for other purposes, such as storage of blood, drugs or biological products, etc.
- This appliance can be used by children aged from 8 years and above and persons with reduced physical sensory or mental capabilities or lack of experience and knowledge if they have been given supervision or instruction concerning use of the appliance in a safe way and understand the hazards involved.
- Children aged from 3 to 8 years are allowed to load and unload refrigerating appliances with adult supervision.
- Cleaning and user maintenance shall not be made by children without supervision.
- Children should be supervised to ensure that they do not play with the appliance.
- If the doors are lockable, the keys must be kept out of the reach of children and not in the vicinity of the appliance, in order to prevent children from being locked inside.
- Risk of child entrapment. Before you dispose of your old fridge or freezer:
 - Take off the doors
 - Leave the shelves in place so that children may not easily climb inside.
- Do not allow any child to get into or climb into the appliance; otherwise suffocation or injury may occur.
- The unit must be maneuvered by a minimum of 2 people.
- When positioning the appliance, ensure the supply cord is not trapped or damaged.
- This appliance can be placed in out buildings or other cold areas. Prolonged operation at an ambient temperature below -15°C will

- affect the performance and energy consumption of the unit.
- Keep ventilation openings in the appliance enclosure or in the built in structure, clear of obstruction.
 - Use a dedicated power socket. The power socket shall not be shared with other electrical appliances.
 - Do not locate multiple portable socket-outlets or portable power supplies at the rear of the appliance.
 - Ensure the socket is suitably earthed. If in any doubt a suitable socket must be installed by a qualified electrician.
 - Do not use extension cords or ungrounded adapters.
 - Do not use if the power cord is damaged. It must be replaced by the manufacturer, its service agent or a similarly qualified person.
 - Do not put flammable, explosive, volatile and highly corrosive items in the appliance to prevent damage to the product or fire.
 - Do not place flammable items near the refrigerator.
 - Do not use electrical appliances inside the food storage compartments of the appliance.
 - Do not place heavy objects on the top of the refrigerator considering that objects may fall when the door is opened or closed.
 - Do not store beer, beverages or other fluid contained in bottles or enclosed containers in the freezer; otherwise they may crack during freezing.
 - Fizzy drinks should not be stored in the freezer.
 - Do not exceed the storage time(s) recommended by the food manufacturers for any kind of food and particularly for commercially quick-frozen food in the freezer.
 - The gaps between the refrigerator doors and between the doors and the body are small. Do not insert fingers in these areas to prevent injury.
 - Do not handle food or containers from the freezer when your hands are wet, as this could result in frostbite.
 - If leaking gas is suspected within the room, turn off the gas and open doors and windows. Do not unplug appliances as they may

- spark and cause an explosion.
- Unplug the appliance during cleaning. Do not reconnect the power to the appliance within five minutes to prevent damage to the compressor due to successive starts.
 - When unplugging the appliance firmly grasp the plug and pull out from the socket. Do not pull the power cord.
 - Do not use mechanical devices or other means to accelerate the defrosting process.
 - While defrosting the appliance, precautions should be taken to maintain the temperature of the food, such as wrapping in towels, or moving to another appliance.
 - The rise in temperature of the frozen food during manual defrosting, maintenance or cleaning could shorten its storage life.
 - The appliance has to be unplugged after use and before carrying out user maintenance on it.
 - Do not damage the refrigerant circuit.
 - Do not disassemble or reconstruct the refrigerator; maintenance of the appliance must be conducted by a specialist.
 - Diagrams within the manual are for illustrative purposes only, due to continual product improvement the product may vary from the illustrations.



RISK OF FIRE / FLAMMABLE MATERIALS

To avoid contamination of food, please note:

- Opening the doors for long periods can cause a significant increase of temperature within the appliance.
- Surfaces that come into contact with food, and accessible drainage systems should be cleaned regularly.
- Raw meat and fish should be stored in suitable containers so it cannot come into contact with or drip onto other food.
- If the appliance is to be left empty for a prolonged period, it should be switched off, defrosted, cleaned and dried before storage. It is also advisable to remove the doors to prevent the growth of mould.

PROPER USE OF THE FREEZER

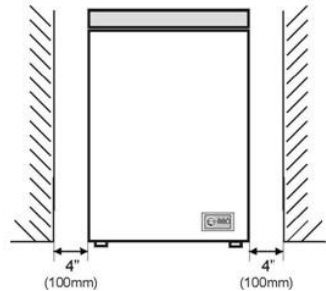
PLACEMENT

Before use, remove all packing materials from inside and outside of the freezer. Tear off any protective film on the door or freezer body.

Keep away from heat and avoid direct sunlight. Do not place the freezer in damp places to prevent rust or reduction of the insulating effect.

Do not spray or wash the freezer; do not put the freezer in places where it may be splashed with water so as not to affect its electrical insulation properties.

The freezer is to be placed in a well ventilated indoor place. To ensure adequate ventilation the top must not be covered and at least 70cm left above the appliance for ventilation / opening of the lid. At least 20cm must be left to both sides and the rear for ventilation. In addition the ground shall be flat, and sturdy.



PRECAUTIONS BEFORE INSTALLATION OR ADJUSTMENT

- Information in the Instruction Manual is only for reference. The physical product may differ.
- Before installation and adjusting of accessories, ensure that the freezer is disconnected from the power.

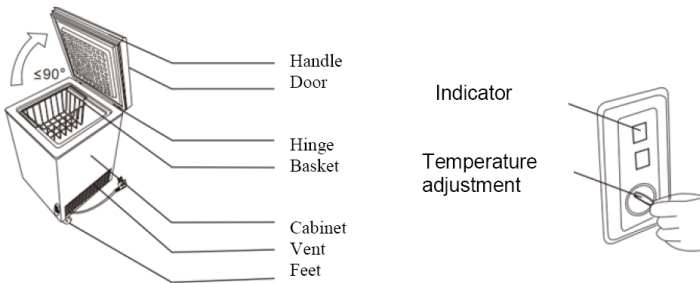
STARTING

- Before initial use, keep the freezer still for 30 minutes before connecting it to a power supply.
- Before putting any food into the unit, the freezer should be left to run for 2-3 hours, or for above 4 hours in summer when the ambient temperature is high.

ENERGY SAVING TIPS

- The appliance should be located in the coolest area of the room, away from heat producing appliances or heating ducts, and out of the direct sunlight.
- Let hot foods cool to room temperature before placing in the appliance. Overloading the appliance forces the compressor to run longer. Foods that freeze too slowly may lose quality, or spoil.
- Be sure to wrap foods properly, and wipe containers dry before placing them in the appliance. This cuts down on frost build-up inside the appliance.
- Appliance storage bin should not be lined with aluminium foil, wax paper, or paper towelling. Liners interfere with cold air circulation, making the appliance less efficient. Organize and label food to reduce the amount of time the unit is open and to prevent extended searches. Remove as many items as needed at one time, and close the lid as soon as possible.

KEY COMPONENTS



Please Note: The diagram is for reference purposes only. Due to continual product improvement, and variations between models the actual product may vary.

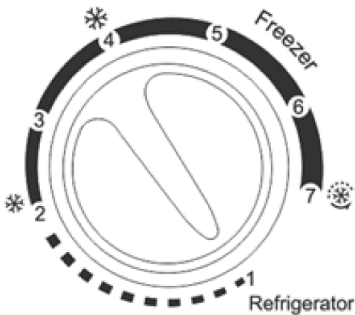
FREEZING

- The low temperature freezing chamber may keep food fresh for a long time and it is mainly used to store frozen foods and making ice.
- The freezing chamber is suitable for storage of meat, fish, rice balls and other foods not to be consumed in short term.
- Meat is preferably divided into small pieces for easy access. Please note food shall be consumed within the shelf time.

Note: Storage of too much food during operation after the initial connection to power may adversely affect the freezing effect of the refrigerator.

Foods stored shall not block the air outlet; or otherwise the freezing effect will also be adversely affected.

CONTROL DIAL



- The desired temperature of the freezer can be adjusted depending on the ambient temperature of the room it is operated in.
- To reduce the temperature of the freezer, turn the control towards MAX.
- To increase the temperature of the freezer, turn the control towards MIN.
- To turn the freezer off turn the control to OFF.

1 (Refrigerator)	Temperature range (5℃)
2-4 (Freezer)	Temperature range (-12~-18℃)
4-7 (Freezer)	Temperature range (-18~-24℃)
7 (Fast freeze)	Temperature range (below-24℃)

When the control dial is set to fast freeze (7) the compressor will continuously operate to quickly cool the food within the freezer.

Caution: The fast Freeze function is a boost to quickly cool the contents, once the contents have cooled, the dial should be turned down.

REFRIGERATING MODE

When changing to refrigerating mode, the food should be removed to prevent spoiling.

Set the control dial to refrigeration mode, then remove all of frozen food from the freezer compartment. Keep empty for one hour.

MAINTENANCE AND CARE

Please unplug the appliance before cleaning, maintenance or defrosting is carried out. During cleaning it is advised that all removable parts are taken from the appliance and cleaned separately to allow access to all gaps and crevices within the appliance.

OVERALL CLEANING

- Dust behind the refrigerator and on the ground should be cleaned regularly to improve the cooling effect and reduce energy usage.
- The interior of the refrigerator should be cleaned regularly to avoid odours.
- Soft towels or a sponge dipped in water and non-corrosive neutral detergents are suggested for cleaning.
- The appliance should be cleaned with clean water and a cloth.
- Following cleaning the surfaces should be wiped dry.
- Door seals should be regularly checked for damage and cleanliness and cleaned with mild soap and water.
- Open the door to allow natural drying before the power is turned back on.
- Do not use hard brushes, steel balls, wire brushes, abrasives, such as toothpastes, organic solvents (such as alcohol, acetone, banana oil, etc.), boiling water, acid or alkaline items to clean the appliance as this could damage its surface and interior.
- For areas that are difficult to clean within the appliance, such as narrow gaps and corners, it is recommended to wipe them regularly with a soft cloth or brush.
- Do not rinse with water so as not to affect the electrical insulation properties.

DEFROSTING

Frost formed due to change of season or temperature may also be manually removed by disconnecting the appliance from the power supply or by wiping with a dry towel.

WHEN NOT IN OPERATION

POWER FAILURE

In case of power failure, even if it is in summer, food inside the appliance can be kept for several hours; during the power failure keep the doors of the appliance closed, and do not insert more food.

LONG-TIME STORAGE

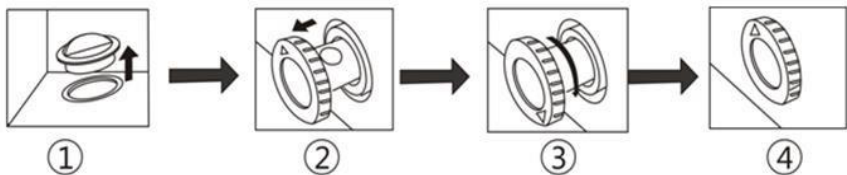
The appliance should be unplugged and then cleaned. The doors should be left open or removed to prevent the build-up of odours.

TRANSPORTATION

Before the appliance is moved, remove all objects from inside, fix the glass partitions, vegetable holder, freezing chamber drawers and etc. with tape, and tighten the levelling feet; close the doors and seal them with tape. During moving, the appliance must not be laid upside down or horizontally, or be vibrated; the inclination during movement shall be no more than 45°. Once moved it should be left to settle before plugging in, as per the advice for first use.

The appliance runs continuously once it is started. Generally, the operation of the appliance should not be interrupted; or otherwise the service life may be impaired.

DRAIN OUTLET



Use to drain excess water after defrosting.

TROUBLESHOOTING

You may try to solve the following simple problems by yourself.

If they cannot be solved, please contact the after-sales department.

Not operating	Check whether the appliance is connected to power or whether the plug is in well inserted. Check whether there is a power failure or partial circuits have tripped
Odours	Odorous foods should be tightly wrapped Check whether any food is spoilt. Clean the inside of the appliance
Long-time operation of the compressor	Long operation of the refrigerator is normal in summer when the ambient temperature is high Do not overload the appliance. Airflow is required for efficient cooling. Food shall be cool before being placed into the appliance The lid is opened too frequently
Doors cannot be properly closed	The lid is stuck by food residue The appliance is not level.
Loud noise	Check whether the floor is level and whether the freezer is placed stably Check whether accessories are placed in their proper locations
Lid fails to be tight	Remove foreign matters on the lid seal Heat the lid seal and then cool it for restoration (or blow it with a hair drier or use a hot towel for heating)
Hot housing	Heat dissipation of the built-in condenser via the housing, which is normal. When housing becomes hot due to high ambient temperature and storage of too much food, it is recommended to provide adequate ventilation to facilitate heat dissipation.
Surface condensation	Condensation on the exterior surface and seals of the freezer is normal when the ambient humidity is very high. Just wipe the condensate with a clean towel.
Abnormal noise	Buzz: The compressor may produce buzzes during operation, and the buzzes are loud particularly upon starting or stopping. This is normal. Creak: Refrigerant flowing inside of the appliance may produce a creaking noise, which is normal.

electriQ UK SUPPORT

www.electriQ.co.uk/support

Call: 0333 043 6692 or complete the online form

Office hours: 9AM - 5PM Monday to Friday

www.electriQ.co.uk

Unit J6, Lowfields Business Park
Lowfields Way, Elland
West Yorkshire, HX5 9DA

DISPOSAL

Refrigerant and cyclopentane foaming materials used within the appliance are flammable. Therefore it must be kept away from fire to prevent damage to the environment or injury.

Do not dispose this product as unsorted waste. Collection of such waste must be handled separately as special treatment is necessary.



Recycling facilities are now available for all customers at which you can deposit your old electrical products. Customers will be able to take any old electrical equipment to participating sites run by their local councils. Please remember that this equipment will be further handled during the recycling process, so please be considerate when depositing your equipment. Please contact the local council for details of your local household waste recycling centres.

PRODUCT FICHE

MODEL	eiQCHEST 99LED	eiQCHEST 141LED	eiQCHEST 199LED
Total Gross Volume(L)	99L	142L	199L
Gross Freezer Volume(L)	99L	142L	199L
Freezer Storage Volume(L)	99L	142L	199L
Refrigerant, Amount	R600a/39g	R600a/45g	R600a/52g
Freezing Capacity(kg/24h)	4.5kg/24h	6.5kg/24h	9.0kg/24h
Temperature Rise Value	10h	12h	20h
Net Weight(kg)	21kg	25kg	27kg
Gross Weight(kg)	24kg	28kg	31kg
Noise(dB(A))	41dB(A)	41dB(A)	41dB(A)
Product Dimensions(mm) (WXDXH)	545x476x835	635x556x835	823x556x835
Energy efficiency class	F	F	F
Energy consumption e16	0.361 (kwh/24h)	0.388 (kwh/24h)	0.426 (kwh/24h)
Energy consumption e32	0.675 (kwh/24h)	0.726 (kwh/24h)	0.796 (kwh/24h)
Rated current(a)	0.6 a	0.7a	0.7a
Rated voltage/frequency	220V-240V/50Hz	220V-240V/50Hz	220V-240V/50Hz
Climate class	N/SN/ST/T	N/SN/ST/T	N/SN/ST/T
Compressor	HYJ60MGA_SF	HYJ60MGA_SF	HYJ60MKA_SF4

V20202224

